



**India Meteorological Department  
(Ministry of Earth Sciences)**

**NATIONAL BULLETIN NO. 19 (LAND/02/2024)**

**TIME OF ISSUE: 2100 HOURS IST**

**DATED:28.08.2024**

**FROM: INDIA METEOROLOGICAL DEPARTMENT (FAX NO. 24643965/24699216/24623220)**

**TO: CONTROL ROOM, NDM, MINISTRY OF HOME AFFAIRS (FAX.NO. 23093750)**

**CONTROL ROOM NDMA (FAX.NO. 26701729)**

**CABINET SECRETARIAT (FAX.NO.23012284, 23018638)**

**PS TO HON'BLE MINISTER FOR S & T AND EARTH SCIENCES (FAX NO.23316745)**

**SECRETARY, MOES (FAX NO. 24629777)**

**H.Q. (INTEGRATED DEFENCE STAFF AND CDS) (FAX NO. 23005137/23005147)**

**DIRECTOR GENERAL, DOORDARSHAN (23385843)**

**DIRECTOR GENERAL, AIR (23421105, 23421219)**

**PIB MOES (FAX NO. 23389042)**

**UNI (FAX NO. 23355841)**

**D.G. NATIONAL DISASTER RESPONSE FORCE (NDRF) (FAX NO. 26105912, 2436 3260)**

**DIRECTOR, PUNCTUALITY, INDIAN RAILWAYS (FAX NO. 23388503)**

**CHIEF SECRETARY, ODISHA (FAX NO. 0674-2536660)**

**CHIEF SECRETARY, WEST BENGAL (FAX NO. 033-22144328)**

**CHIEF SECRETARY, JHARKHAND (FAX NO. 0651-2400255)**

**CHIEF SECRETARY, BIHAR (FAX NO. 0612-2217085)**

**CHIEF SECRETARY, MADHYA PRADESH (FAX NO. 0755-2441076)**

**CHIEF SECRETARY, RAJASHTHAN (FAX NO. 0141-2227114)**

**CHIEF SECRETARY, MAHARASHTRA (FAX NO. 022- 22028594)**

**CHIEF SECRETARY, GUJARAT (FAX NO. 079-23250305)**

**CHIEF SECRETARY, DAMAN & DIU (FAX NO. 0260-2230775)**

**CHIEF SECRETARY, DADRA & NAGAR HAVELI (FAX NO. 0260-2645466)**

**CHIEF SECRETARY, GOA (FAX NO. 0832-2415201)**

**Sub: Deep Depression over Saurashtra & Kachchh**

The deep depression over Saurashtra & Kachchh remained practically stationary during past 6 hours and lay centered at 1730 hours IST of today, the 28th August over the same region near latitude 23.7°N and longitude 69.7 °E, 50 km north-northwest of Bhuj (Gujarat), 100 km east-northeast of Naliya (Gujarat) and 290 km east-southeast of Karachi (Pakistan).

It is likely to move slowly west-southwestwards across Saurashtra & Kachchh region and reach Saurashtra & Kachchh and adjoining areas of Pakistan coasts by morning of 29<sup>th</sup> August. It is likely to continue to move west-southwestwards and emerge into northeast Arabian Sea off Kachchh and adjoining Saurashtra & Pakistan coasts by morning of 30<sup>th</sup> August. While moving west-southwestwards over northeast Arabian Sea away from the Indian coast, there is a possibility of its temporary and marginal intensification over northeast Arabian Sea on 30<sup>th</sup> August.

**Warnings:**

**(i) Rainfall Warning:**

**Gujarat State:**

**(a) Saurashtra & Kachchh:** Light to moderate rainfall at most places with heavy to very heavy rainfall at a few places and extremely heavy rainfall at isolated places is likely on 28<sup>th</sup> August;

heavy to extremely heavy rainfall at isolated places on 29<sup>th</sup> August and heavy rainfall at isolated places on 30<sup>th</sup> August.

**(b) Gujarat region:** Light to moderate rainfall at many places with heavy rainfall at isolated places is very likely on 28<sup>th</sup> August.

**South Rajasthan:** Light to moderate rainfall at many places with heavy rainfall at isolated places is very likely on 28<sup>th</sup> August.

**Madhya Maharashtra:** Light to moderate rainfall at most places with heavy rainfall at isolated places is likely on 28<sup>th</sup> August.

**Konkan & Goa:** Light to moderate rainfall at most places with heavy rainfall at isolated places is likely on 28<sup>th</sup> August.

**(ii) Wind warning:**

- Squally wind speed reaching 45-55 kmph gusting to 65 kmph is likely over the districts of South Gujarat Region and Saurashtra & Kutch during 28<sup>th</sup>-29<sup>th</sup> August.
- Squally wind speed reaching 55-65 kmph gusting to 75 kmph is very likely to prevail along & off Gujarat coasts & adjoining Pakistan coasts and northeast & adjoining eastcentral Arabian Sea during 28<sup>th</sup>-30<sup>th</sup> August.
- Strong surface wind speed reaching 40-50 kmph gusting to 60kmph is very likely to prevail over South Rajasthan on 27<sup>th</sup> August.
- Strong wind speed reaching 40-50 kmph gusting to 60 kmph is likely to prevail along and off north Maharashtra coasts on 28<sup>th</sup>- 29<sup>th</sup>August.

**(iii) Sea condition:**

- Squally weather with Rough to very Rough sea conditions is very likely to prevail along & off Gujarat & adjoining Pakistan and north Maharashtra Coasts and Northeast & adjoining Eastcentral Arabian Sea till 30<sup>th</sup>August.

**(iv) Fisherman warning:**

- Fishermen are advised not venture into Northeast & adjoining Eastcentral Arabian Sea and along & off Gujarat & adjoining Pakistan and north Maharashtra Coasts till 30<sup>th</sup> August.

**(v) Advisory for offshore/onshore Exploration and Production (E & P) Operators:**

The small ships and offshore -onshore E & P operators, shipping and port authorities along & off Gujarat & north Maharashtra Coasts and Northeast & adjoining Eastcentral Arabian Sea are advised to keep watch on developing weather and take necessary actions till 30<sup>th</sup> August.

**(vi) Impact Expected**

- Localized Flooding of roads, water logging in low lying areas and closure of underpasses mainly in urban areas of the above region.
- Occasional reduction in visibility due to heavy rainfall.
- Reduction of visibility over sea area due to sea spray induced by strong wind and heavy rainfall.
- Disruption of traffic in major cities due to water logging in roads leading to increased travel time.
- Minor damage to kutcha roads.
- Possibilities of damage to vulnerable structure.
- Localized Landslides/Mudslides/landslips/mud slips/land sinks/mud sinks.
- Damage to horticulture and standing crops in some areas due to inundation.

- It may lead to riverine flooding in some river catchments (for riverine flooding please visit Web page of CWC)

**(vii) Action Suggested**

- Fishermen are advised not to venture into Northeast & adjoining Eastcentral Arabian Sea and along & off Gujarat & adjoining Pakistan and north Maharashtra Coasts till 30th August.
- Judicious regulation of offshore/onshore Operations
- Judicious regulation of surface transports including railways and roadways.
- Check for traffic congestion on your route before leaving for your destination.
- Follow any traffic advisories that are issued in this regard.
- Avoid going to areas that face the water logging problems often.
- Avoid staying in vulnerable structure.

**(viii) Agrometadvisories for Heavy Rainfall likely over Madhya Pradesh, South Rajasthan, Gujarat State and North Maharashtra**

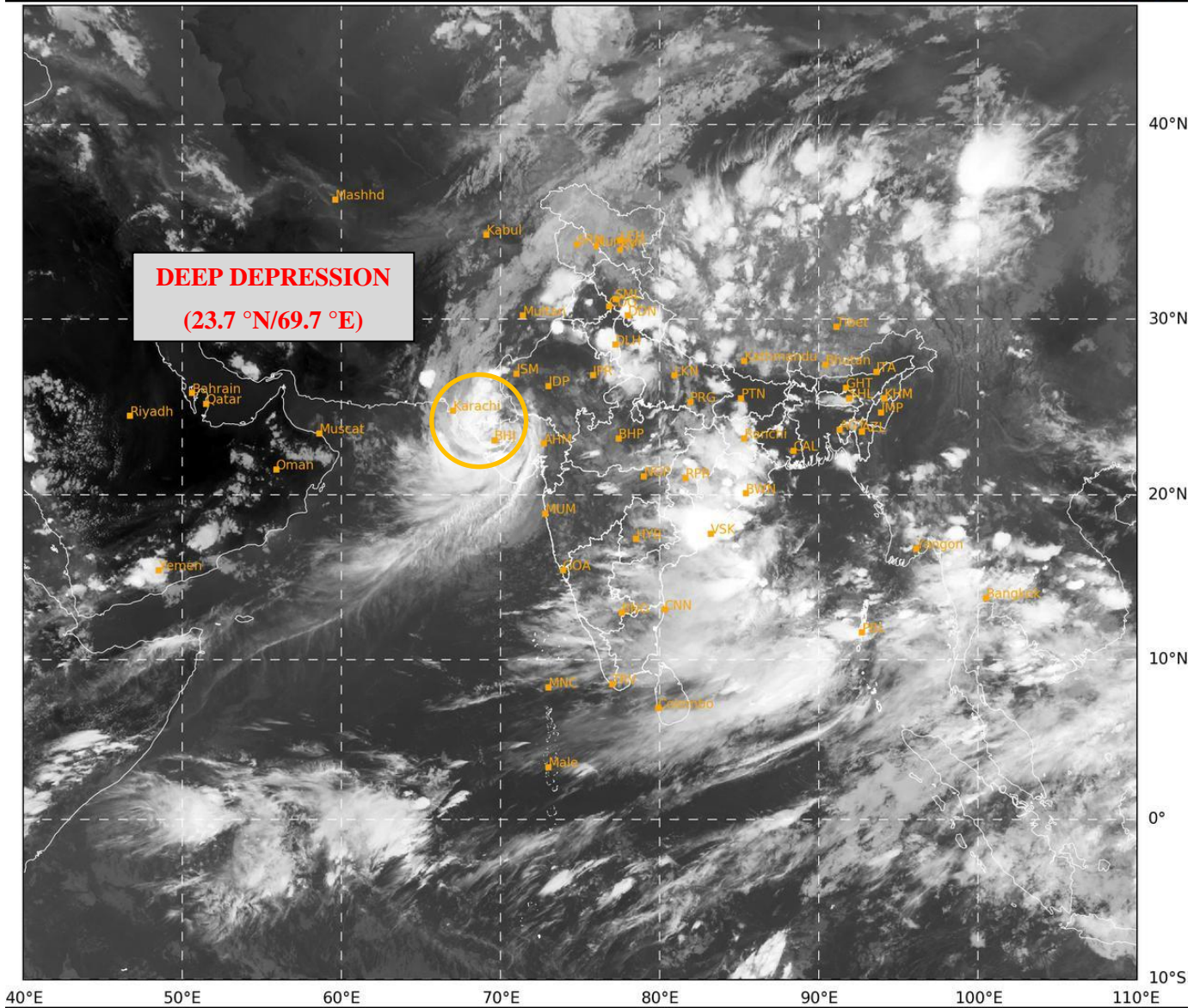
- Make provision for draining out excess water from crop fields to avoid water stagnation in Madhya Pradesh, South Rajasthan, Gujarat State and North Maharashtra.
- Provide mechanical support to horticultural crops and staking to vegetables.

**Significant Rainfall (in cm) recorded from 0830 hours IST till 1730 hours IST of today, the 28<sup>th</sup> August is given in Annexure -I**

**Next bulletin will be issued at 0230 hours IST of tomorrow, the 29<sup>th</sup> August, 2024.**

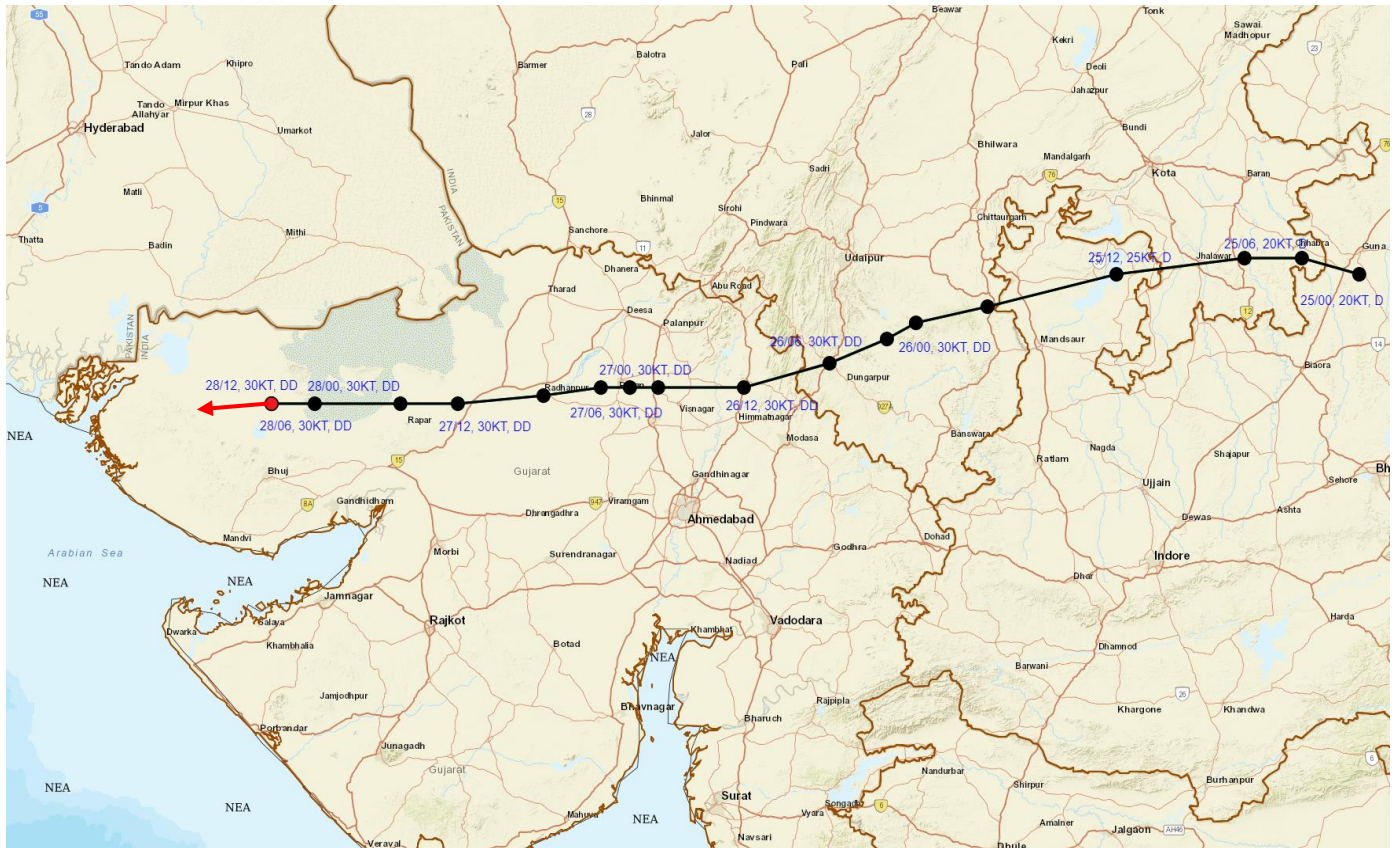
**(Dr. Ananda Kumar Das)  
Scientist F, Cyclone Warning, New Delhi**

*Copy to: ACWC Kolkata/ACWC Mumbai/RMC Mumbai/CWC Ahmedabad/MC Jaipur/RMC, Nagpur/MC, Bhopal//CWC Bhubaneswar/MC, Goa/MC, Ranchi*





## OBSERVED AND FORECAST TRACK OF DEEP DEPRESSION OVER SAURASHTRA & KACHCHH BASED ON 1200 UTC (1730 IST) OF 28<sup>TH</sup> AUGUST, 2024.



**DATE/TIME IN UTC**

**IST=UTC + 0530**

**L: LOW PRESSURE AREA**

**WML: WELL MARKED LOW PRESSURE AREA**

**D: DEPRESSION (17-27 KT)**

**DD: DEEP DEPRESSION (28-33 KT)**

**CS: CYCLONIC STORM (34-47 KT)**

**SCS: SEVERE CYCLONIC STORM (48-63KT)**

**VSCS: VERY SEVERE CYCLONIC STORM (64-89 KT)**

**ESCS: EXTREMELY SEVERE CYCLONIC STORM (90-119 KT)**

**SuCS: SUPER CYCLONIC STORM (≥ 120 KT)**

**LESS THAN 34 KT**

**34-47 KT**

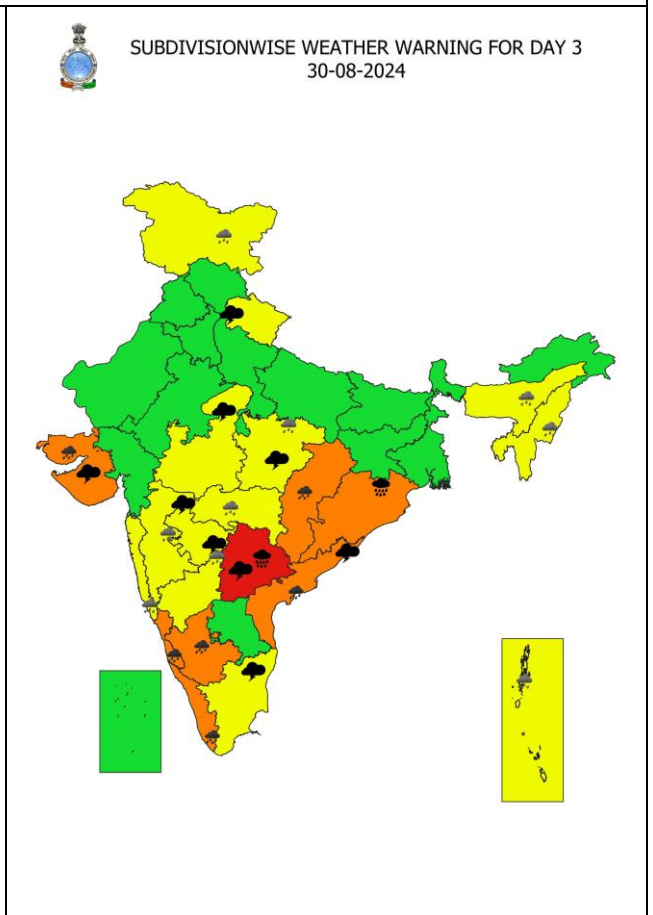
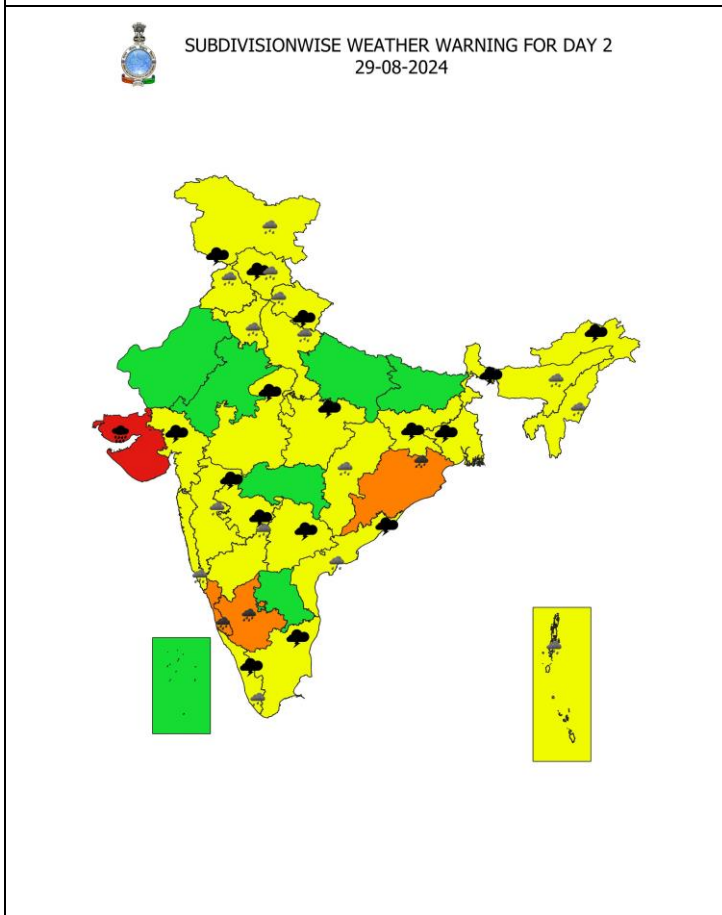
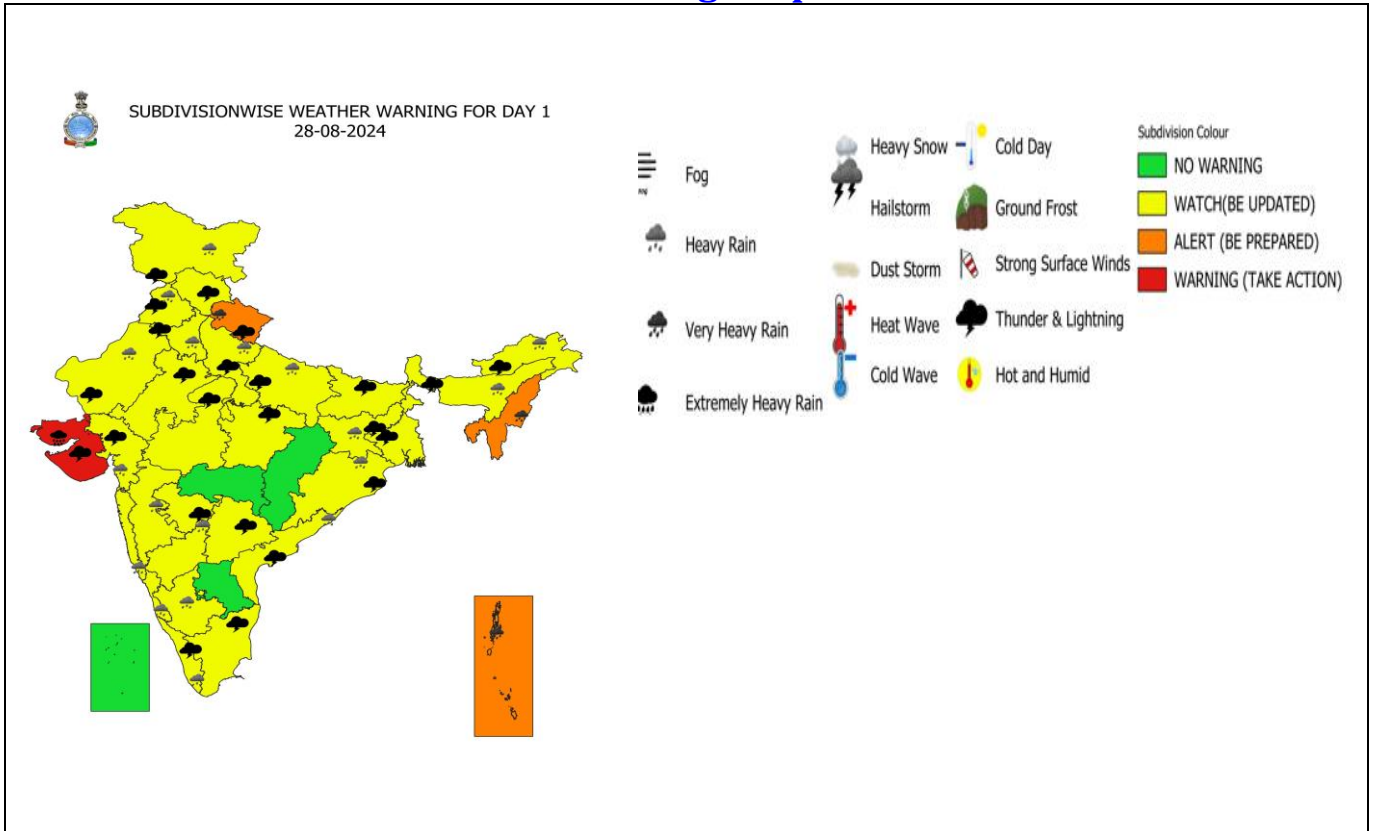
**≥ 48 KT**

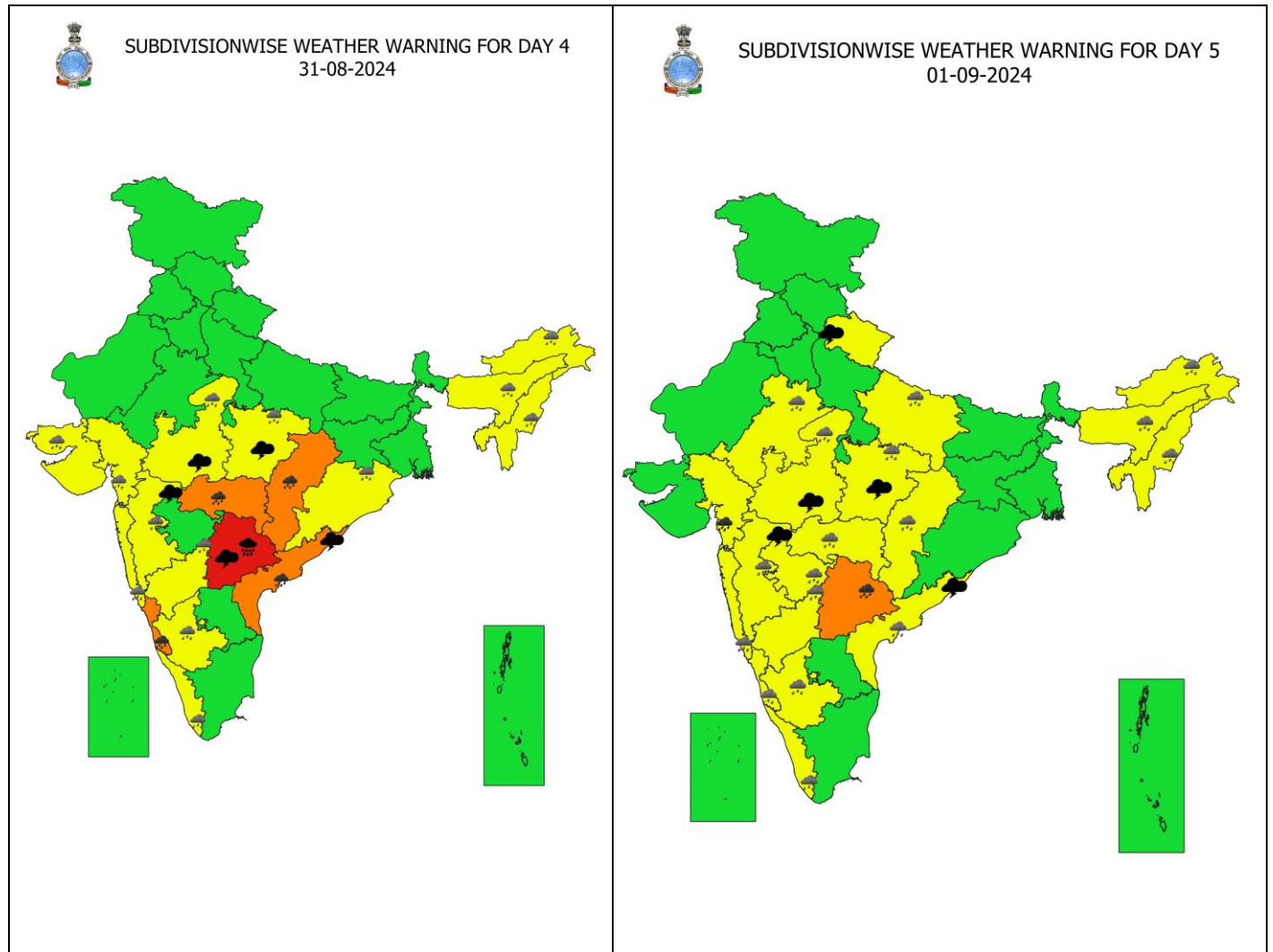
**OBSERVED TRACK**

**FORECAST TRACK**

**CONE OF UNCERTAINTY**

# Weather Warning Graphics

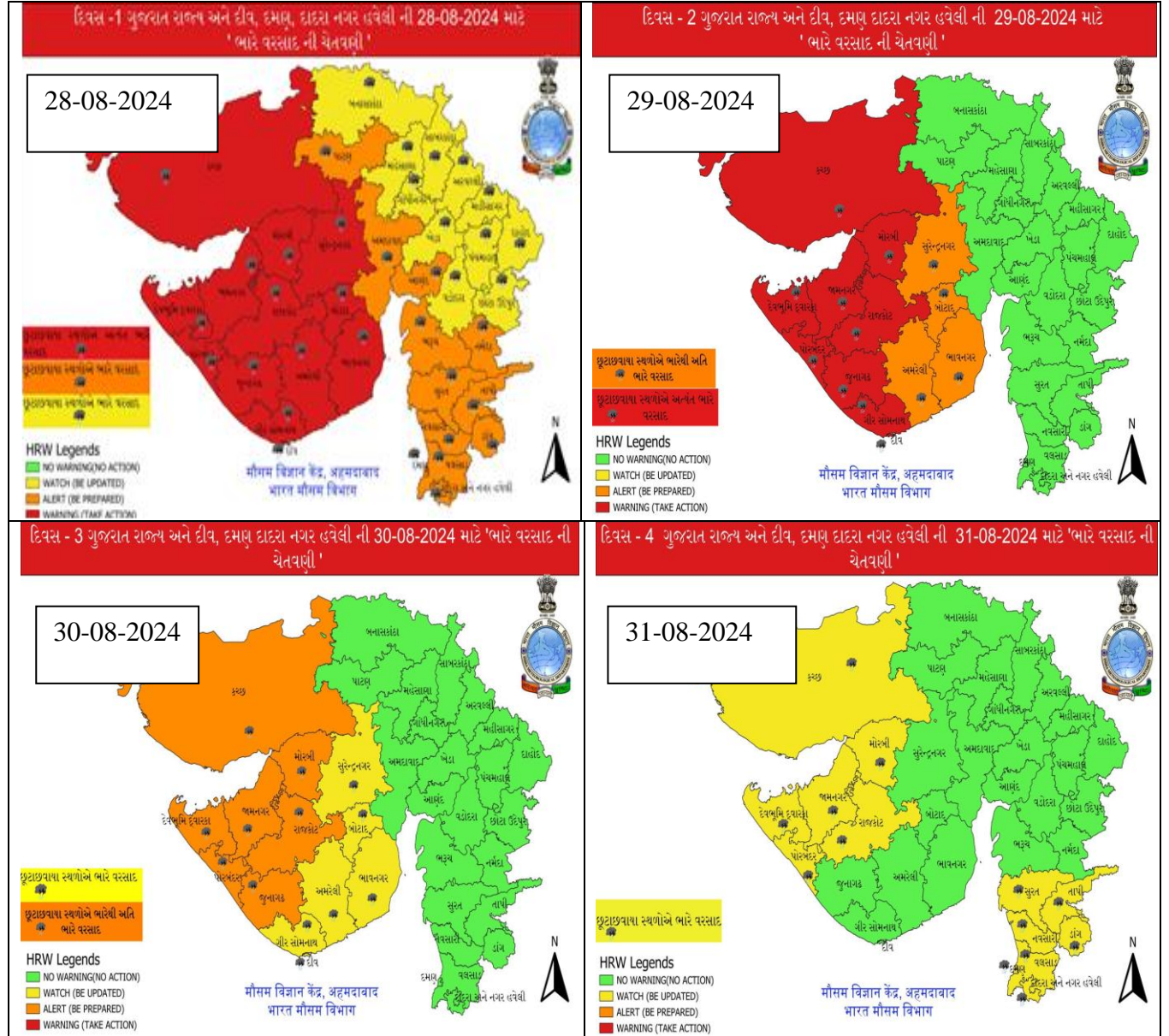




- Action may be taken based on **ORANGE AND RED** COLOUR warnings.
- Vulnerable regions likely urban and hilly areas action may be initiated for heavy rainfall warning.
- As the lead period increases forecast accuracy decreases.

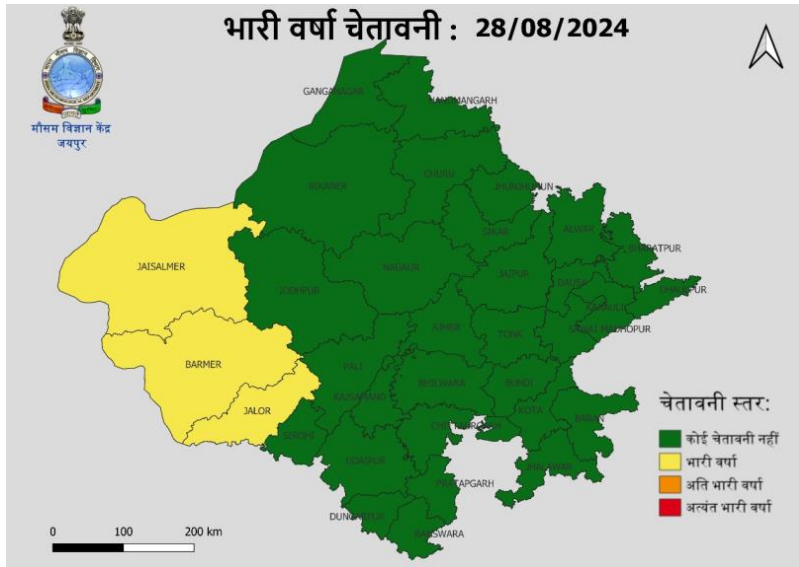
# District wise Warning Graphics

## Gujarat

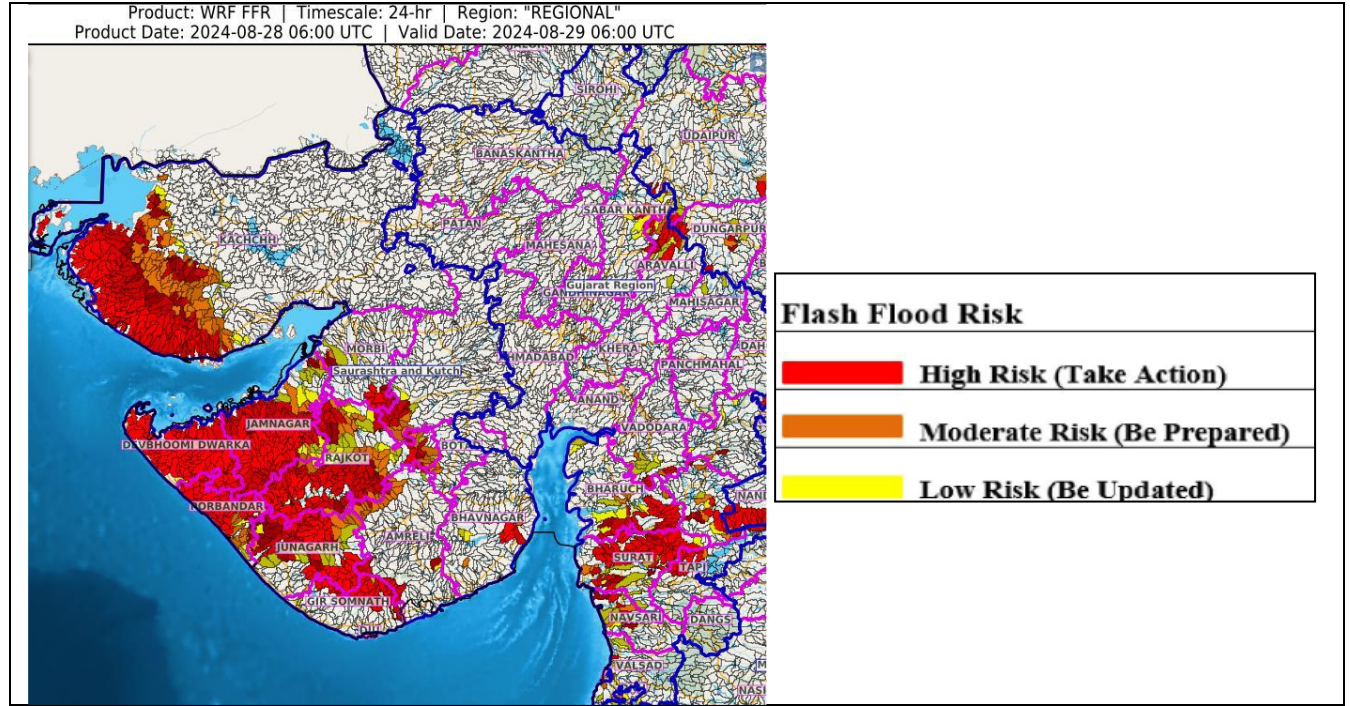




# Rajasthan



## Flash Flood Guidance



### 24 hours Outlook for the Flash Flood Risk (FFR) till 1130 IST of 29-08-2024 :

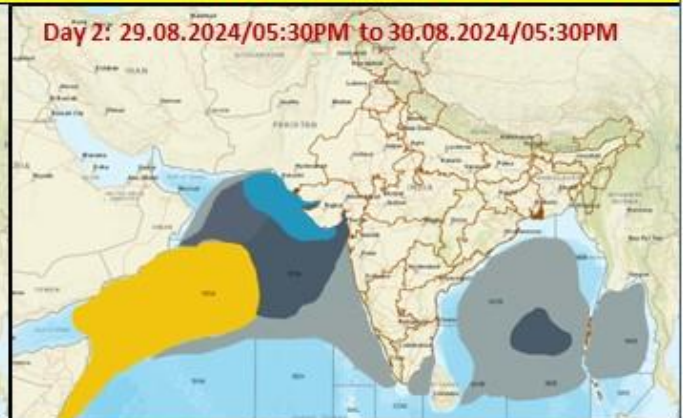
Moderate flash flood risk likely over few watersheds & neighbourhoods of following Met Sub-divisions during next 24 hours.

**Gujarat Region** - Daman, Aravalli, Bharuch, Chhota Udepur, Mahisagar, Narmada, Navsari, Sabar Kantha, Surat, Tapi, Vadodara and Valsad districts.

**Saurashtra & Kutch** - Amreli, Bhavnagar, Botad, Devbhoomi Dwarka, Diu, Gir Somnath, Jamnagar, Junagarh, Porbandar, Rajkot, Surendranagar, Morbi and Kachchh districts.

Surface runoff/ Inundation may occur at some fully saturated soils & low-lying areas over Area of Concern (AoC) as shown in map due to expected rainfall occurrence in next 24 hours.

### Fishermen Warning Graphics



	Squally WX with wind speed 35-45 kmph gusting to 55 kmph
	Squally WX with wind speed 45-55 kmph gusting to 65 kmph
	Squally wind with speed 45-55 kmph gusting to 65 kmph
	Squally wind with speed 55-65 kmph gusting to 75 kmph

**Fishermen are advised not to venture into the marked areas.**

## ANNEXURE –I

**Significant Rainfall recorded from 0830 hours IST till 1730 hours IST of today 28.08.2024 (in cm):**

**Gujarat State:** Rajkot 8, Dwarka 16, Jamnagar 12, Porbandar 6, Surat 4, Kutch 5, Junagadh 3, Valsad 2, Morbi 3, Vadodara 4, Bharuch 3, Panchmahal 2, Chhotaudepur 3, Navsari 3